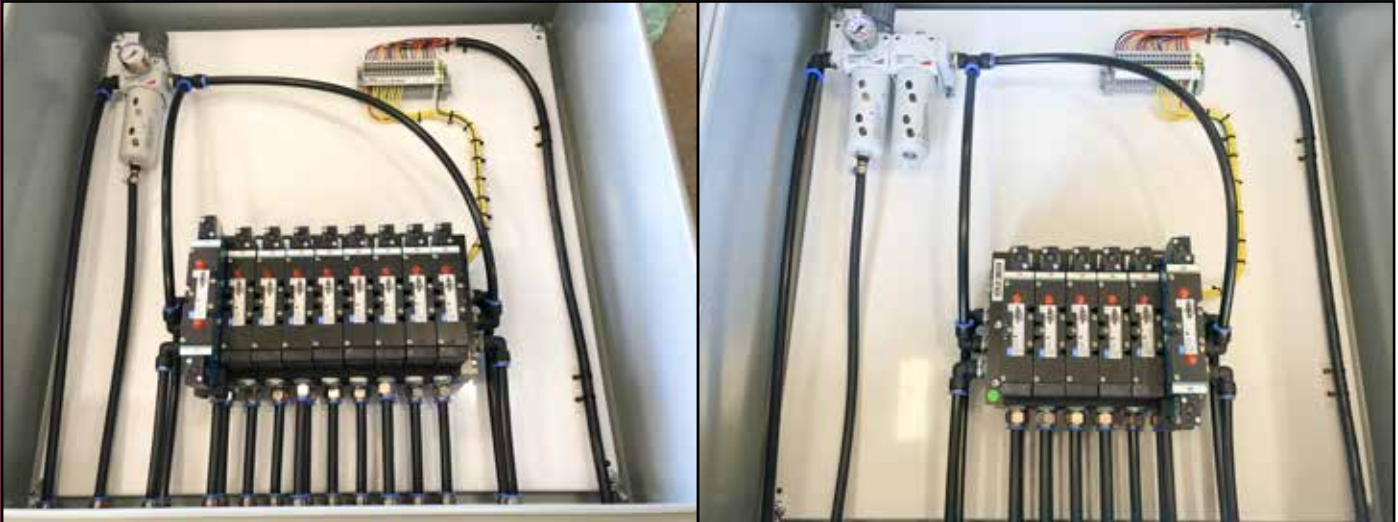


Batching and Equipment Controls



9 Stack Mac Valve Solenoid Panel For Cement Controls - 9-MACSP-ASM

- Eight Single Solenoid 9300 Series Valves
- One Double Solenoid 9300 Inching Type Valve
- Manifold For Common Air And Electric Hookups
- Wired To Terminal Strip
- Filter / Regulator
- One Flow Control Valve For Scale Discharge Gate
- Completely Plumbed With Quick Connect Type House Fittings
- Mounted And Enclosed In A NEMA 3 Enclosure
- 80'-0" Of 37 Pin Cable
- Hose And Fittings To Plumb Plant

6 Stack Mac Valve Solenoid Panel For Aggregate Controls - 6-MACSP-ASM

- Five Single Solenoid 9300 Series Valves
- One Double Solenoid 9300 Inching Type Valve
- Manifold For Common Air And Electric Hookups
- Wired To Terminal Strip
- Filter / Regulator / Oiler
- One Flow Control Valve For Scale Discharge Gate
- Completely Plumbed With Quick Connect Type House Fittings
- Mounted And Enclosed In A NEMA 3 Enclosure
- 50'-0" Of 37 Pin Cable
- Hose And Fittings To Plumb Plant

Batching and Equipment Controls



Push Button Control Panel - PBCP-ASM

- Two Cement Feed Momentary Buttons
- Two Cement Aeration Maintained Buttons
- One Cement Scale Open Button
- One Cement Scale Closed Button
- One Cement Scale Open Indicator
- One Cement Scale Vibrator Maintained Button
- One Cement Scale Aeration Maintained Button
- Four Bin Indicator Lights
- Two Dust Collector Vibrator Switches
- Four Aggregate Feed Momentary Buttons
- One Aggregate Scale Open Button
- One Aggregate Scale Closed Button
- One Aggregate Scale Open Indicator
- One Aggregate Scale Vibrator Maintained Button
- One Transfer Belt On/ Off Switch
- One Power On/ Off Switch
- One Power Indicator Light
- One Main Circuit Breaker

Batching and Equipment Controls



Electric Motor Starter Packages - EMSP-ASM

- NEMA 3 Enclosure
- Main Disconnect
- Control Transformer
- Fuses
- Start/ Stop Buttons (local or remote mounting)
- 208/ 230/ 460/ 575 Volt
- Single or Three Phase

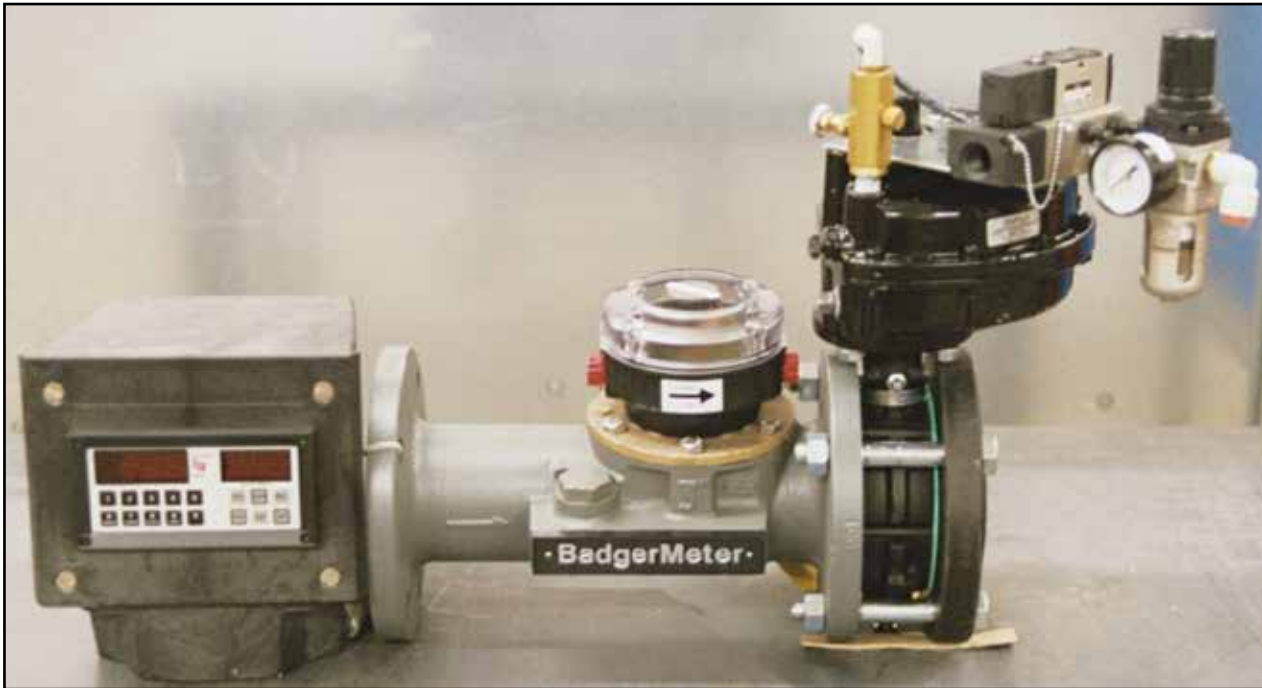
Batching and Equipment Controls



Variable Frequency Drive Packages - VFD-ASM

- NEMA 3 Enclosure
- Main Disconnect
- Constant Torque Drive
- Fuses
- Local/ Remote Display
- Field Adjustable Speed Control (analog or potentiometer)
- Programmable For 2, 4 or 8 Preset Speeds
- 208/ 230/ 460 Volt
- Single or Three Phase

Batching and Equipment Controls



Badger Water Meters - 2-BWM-ASM

- 2" Turbo Butterfly Valve With PFT-3E Unscaled Transmitter
- CB-20 Panel Mount Batch Controller
- NEMA 4X Enclosure

Upgrade Available:

- 3" Turbo Butterfly Valve With PFT-3E Unscaled Transmitter
- CB-20 Panel Mount Batch Controller
- NEMA 4X Enclosure

Option: Upgrade to PFT-4E Scaled Transmitter

Batching and Equipment Controls



Ingersoll Rand 10 HP Air Compressor - 3-BWM-ASM

- Type 30 10 HP 3 PH Compressor
- Horizontal 120 Gallon Capacity Tank
- SDR35 Refrigerated Air Dryer
- Filter with Auto Drain
- Start Up Kit

Batching and Equipment Controls



Cash Register Style Manual Air Control Panel - CRS-MACP-SM

- Carbon Cash Register Design Enclosure
- (6) Mac Two Position Manual Air Valves
- (2) Camozzi Three Position Manual Air Valves
- Quick Connect Fittings and Connecting Hose
- No Electricity Required

Batching and Equipment Controls



Anti-Overfill Pinch Valve - 4-PV-ASM / UPGRADE 5-PV-ASM

- 4" Cast Aluminum Pinch Valve
- Control Panel with Audible and Visual Warning Devices
- Regulator and Solenoid

Upgrade Available:

- 5" Cast Aluminum Pinch Valve
- Control Panel with Audible and Visual Warning Devices
- Regulator and Solenoid

(Must be used with a high level indicator.)