

# Belgrade Batching Silos

**BELGRADE**  
**STEEL TANK**

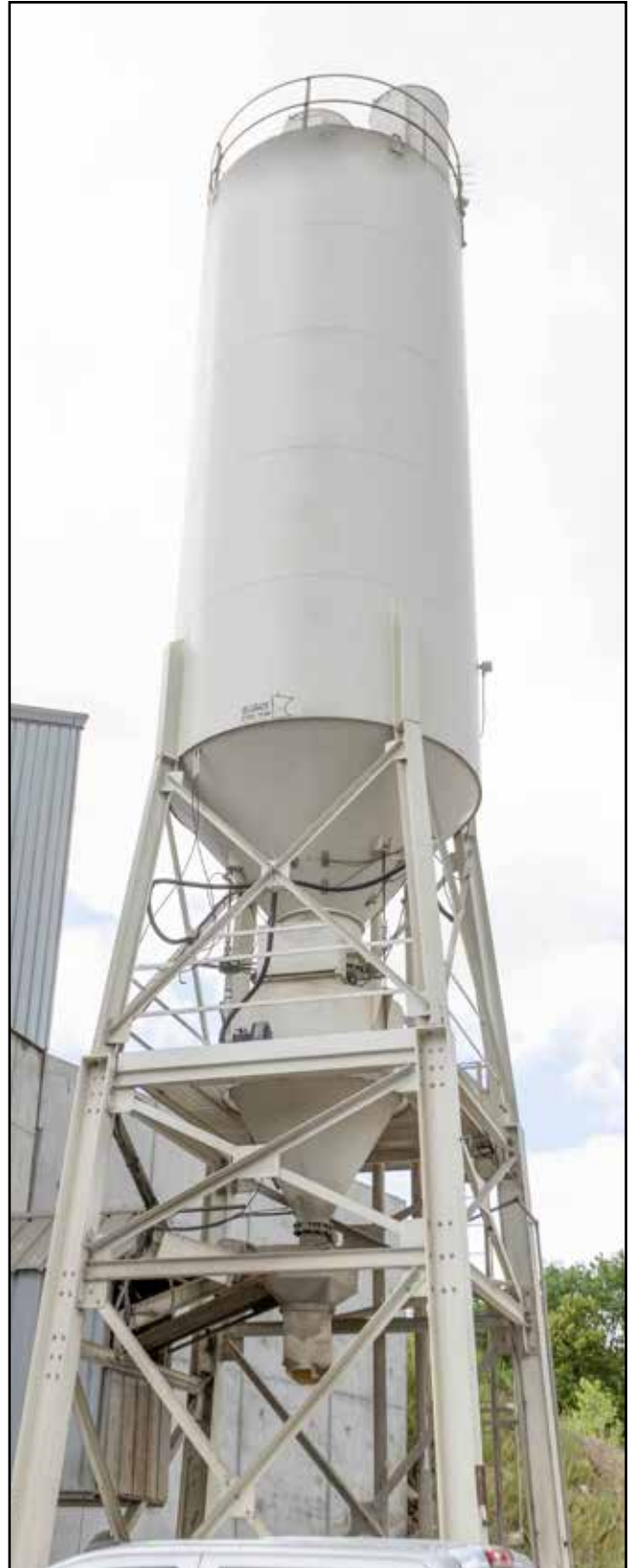


## Belgrade Batching Silo

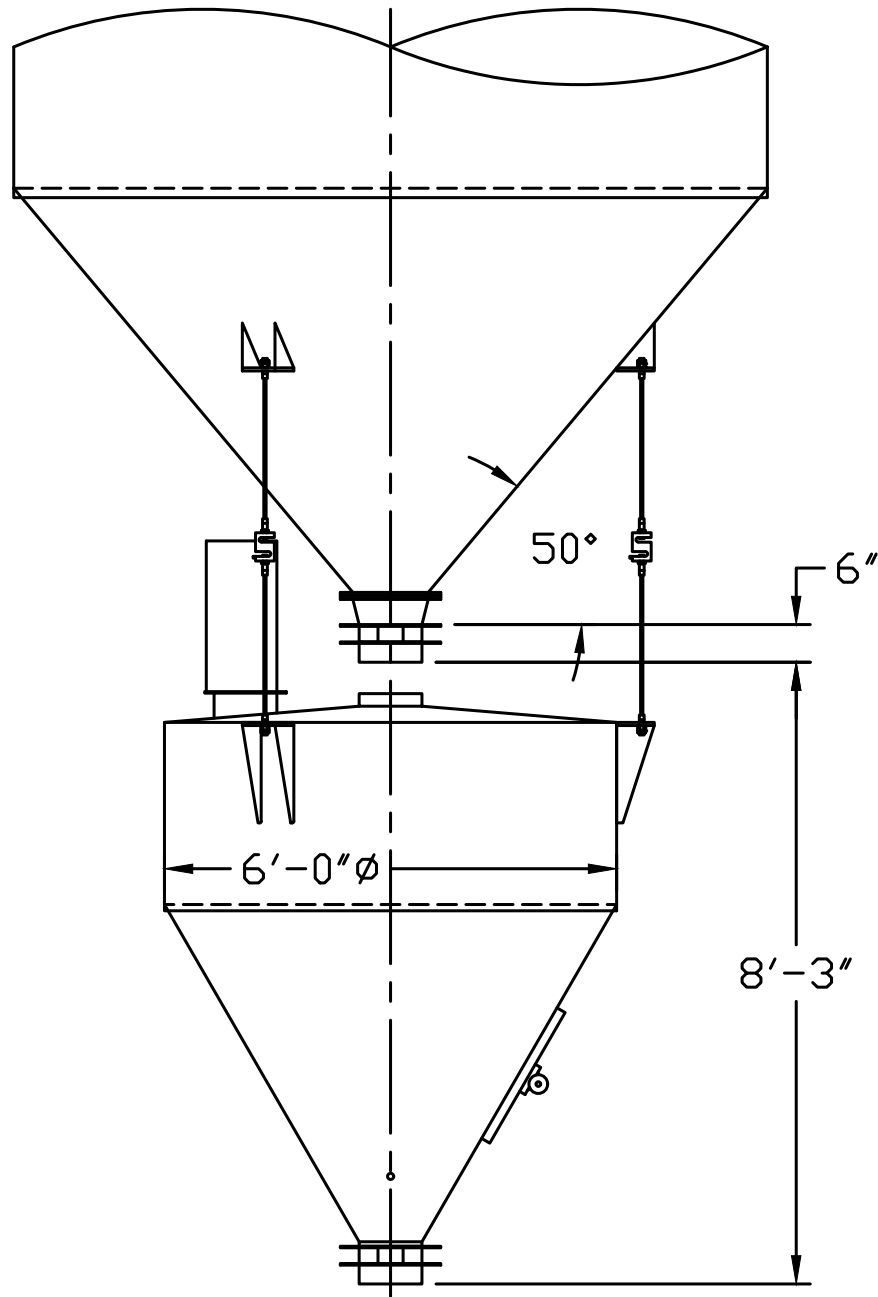
- Structural Stand with all Standard Equipment- 20' Tall Structure with Extension Fill Pipe, Ladder Landing and Ladder with Fall Arrest Cable System
- Work Platform
- 10 Yard Cement Batching Package with all Standard Equipment

## Options

- 12 Yard Cement Batching Package
- Bin Level Indicators



# 10 Yard Cement Scale Hopper



## Batching Package

- Scale Hopper with Air Vibrator
- Weigh System with Digital Indicator
- (2) 10" Butterfly Valves with Air Actuators
- Limit Switch
- 16 Sq. Ft. Filter Vent
- (2) Internal Air Pads
- Regulator & Check Valve
- Gum Rubber and Vinyl Boot
- Optional 12 Yard Capacity

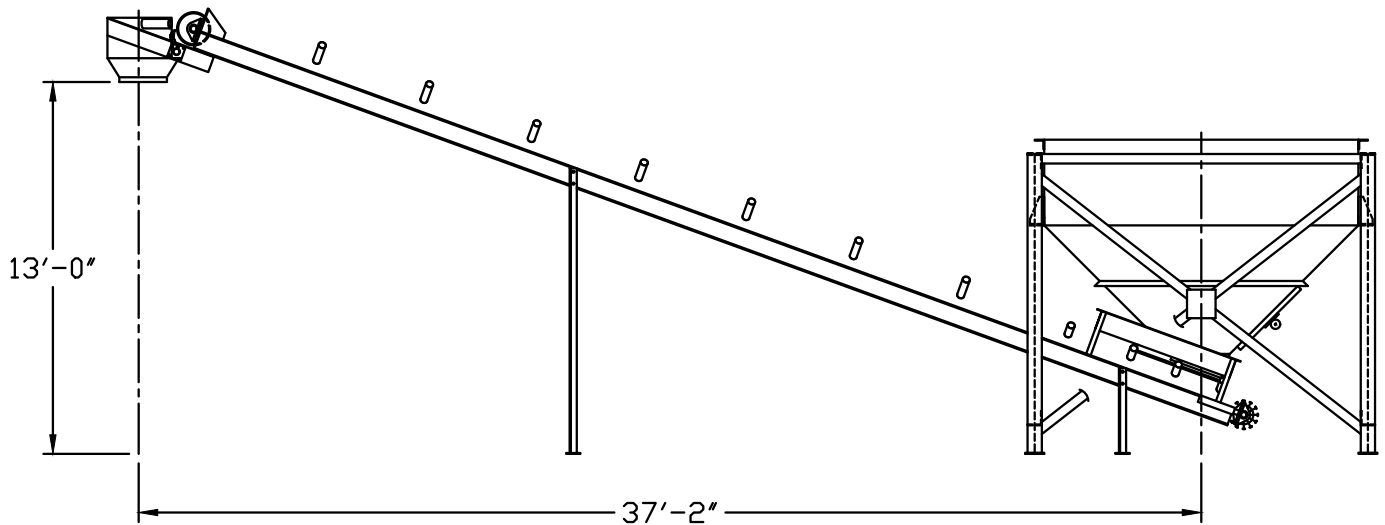
# 10 Yard Aggregate Scale Hopper



## Scale Hopper

- 1/4" & 3/16" Material
- 12" x 38" Gate with 3 1/2" x 8" Air Cylinder
- Air Vibrator
- (4) 15,000# Load Cells and Digital Indicator
- Scale Support Stand
- Optional 12 Yard Capacity

# 24" x 38'-6" Belt Conveyor



## 24" x 38'-6" Belt Conveyor

- 300 FPM / 340 TPH
- 8" Channel Frame 20-degree and 35-degree Trough Idlers and Returns
- 24" Wide 3/16 x 1/16 2-ply belt
- 14" Head Pulley with Herring-bone Lagging on 2 - 3/16" Drive Shaft and Pillow Block Bearings
- Individual Belt Tighteners with 3/4" Sealed in Grease Threaded Rods
- 10 HP 3-Phase Motor T.E.F.C.
- Shaft Mount Gear Box Complete with Double Groove Pulleys, Belts, and Backstop
- Discharge Hopper with Rubberized Sock
- Torsion Style Belt Wiper
- Water Pipe
- Intermediate Support Stand where required
- Sandblast, Prime, and Paint
- Standard Colors: RAL 7038 Gray, RAL 9010 White, RAL 1001 Tan, RAL 1032 Yellow

## Options

- Water Meter
- Motor Starter Package
- 30" Belt Width (300 FPM / 576 TPH)

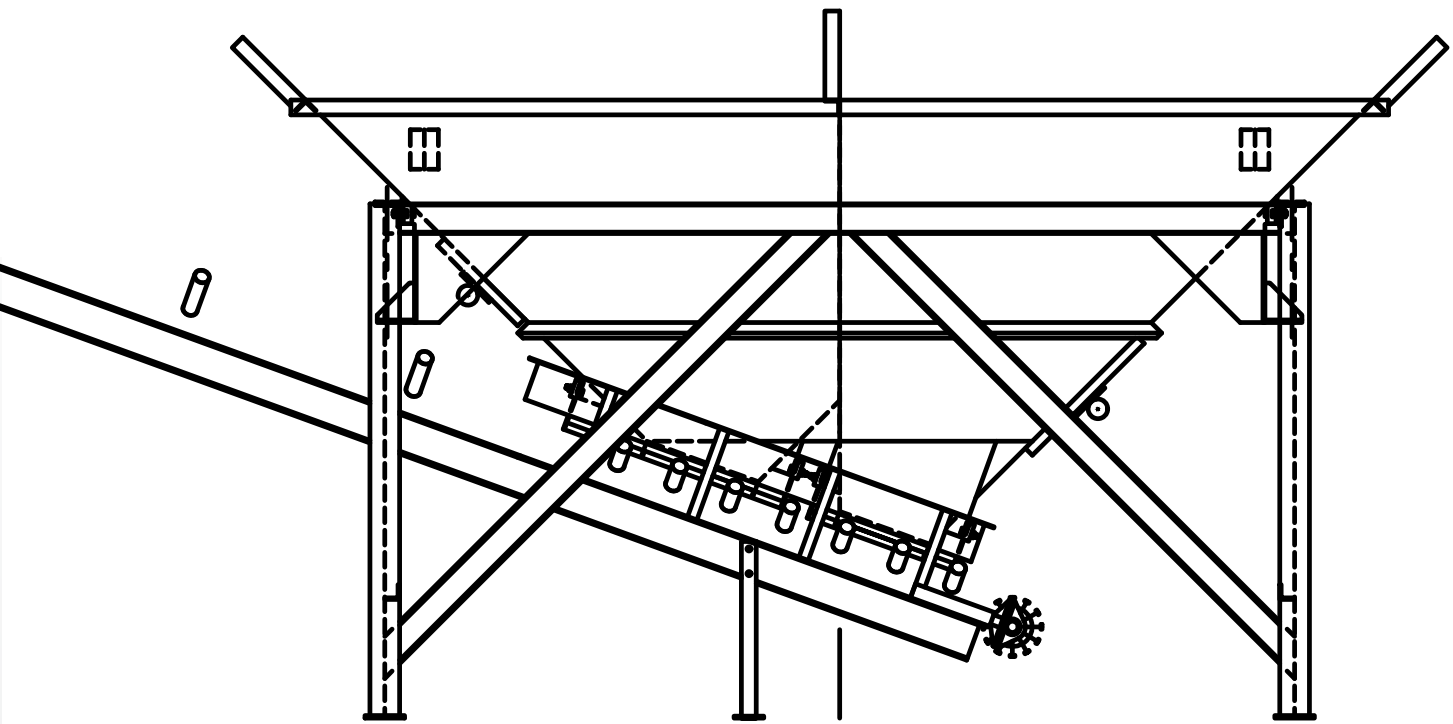
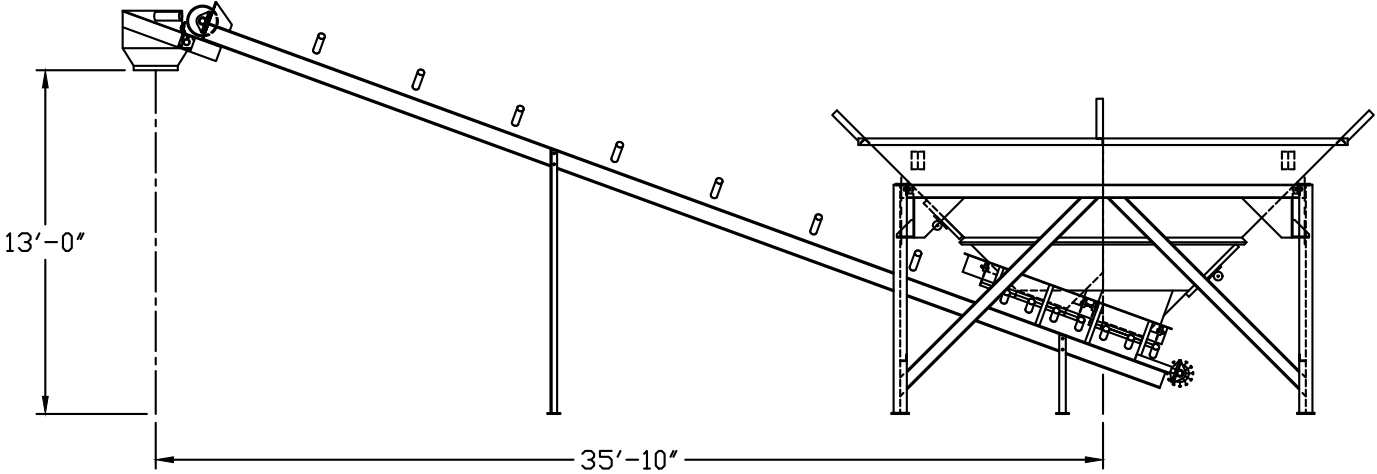
## 12 Yard Decumulative Aggregate Scale Hopper



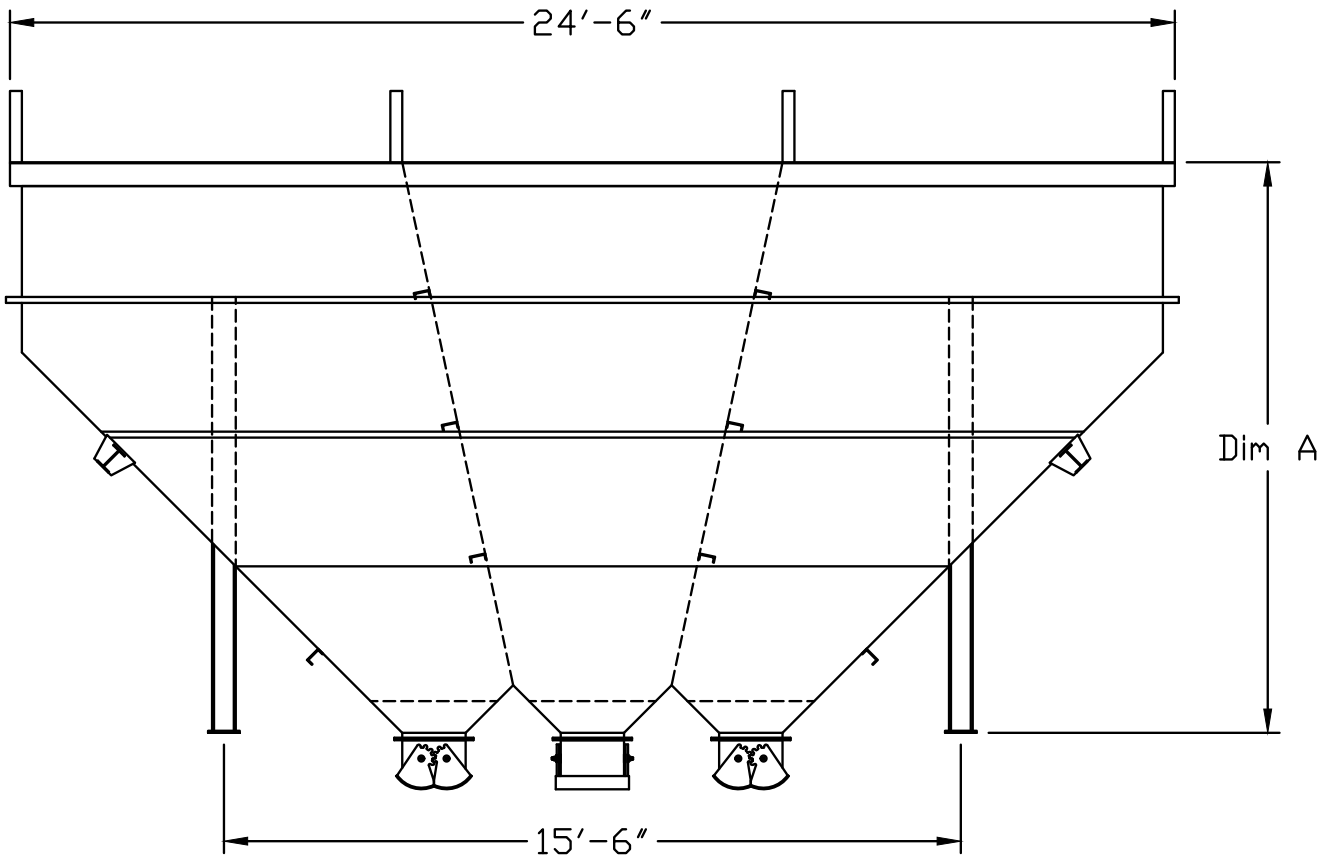
### Scale Hopper

- Two Compartment 12 Yard Scale Hopper
- Weigh System with Digital Indicator and Decumulative Batching Software
- Structural Support Stand
- 24" x 38'-6" Long Belt Conveyor
- Gear Box Drive with Back Stop and Motor
- (2) Discharge Gates with Cylinders and Limit Switches
- (2) Air Vibrators with Air Hose
- Collecting Hopper with Gum Rubber Boot
- Torsion Style Belt Wiper
- Water Pipe
- Optional: Upgrade to 30" Belt

# 12 Yard Decumulative Aggregate Scale Hopper



# Three Compartment Aggregate Bins

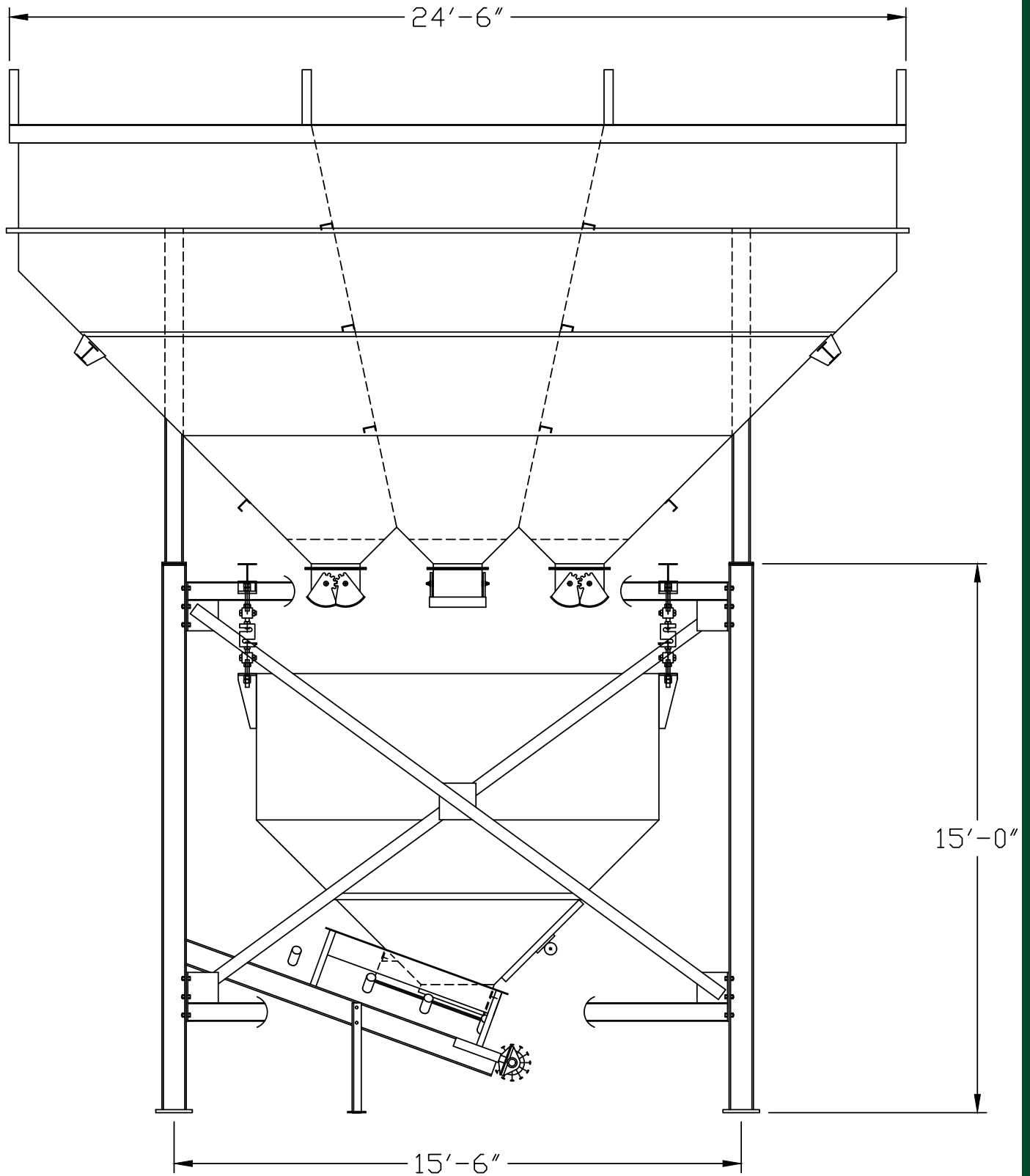


## Standard Equipment

- 1/4" Thick Material on all Cones and Sloped Walls
- 3/16" Thick Material on all Straight Walls and Dividers
- Removable Heap Plates: 1'-6" High x 3/16" Thick Material
- (2) 16" x 16" Aggregate Gates with Air Cylinders
- (2) 16" x 48" Aggregate Gates with Air Cylinders
- 8" Beam Structural Stand to Provide 14'-0" Clearance Under Gates
- Optional AR Steel Liner

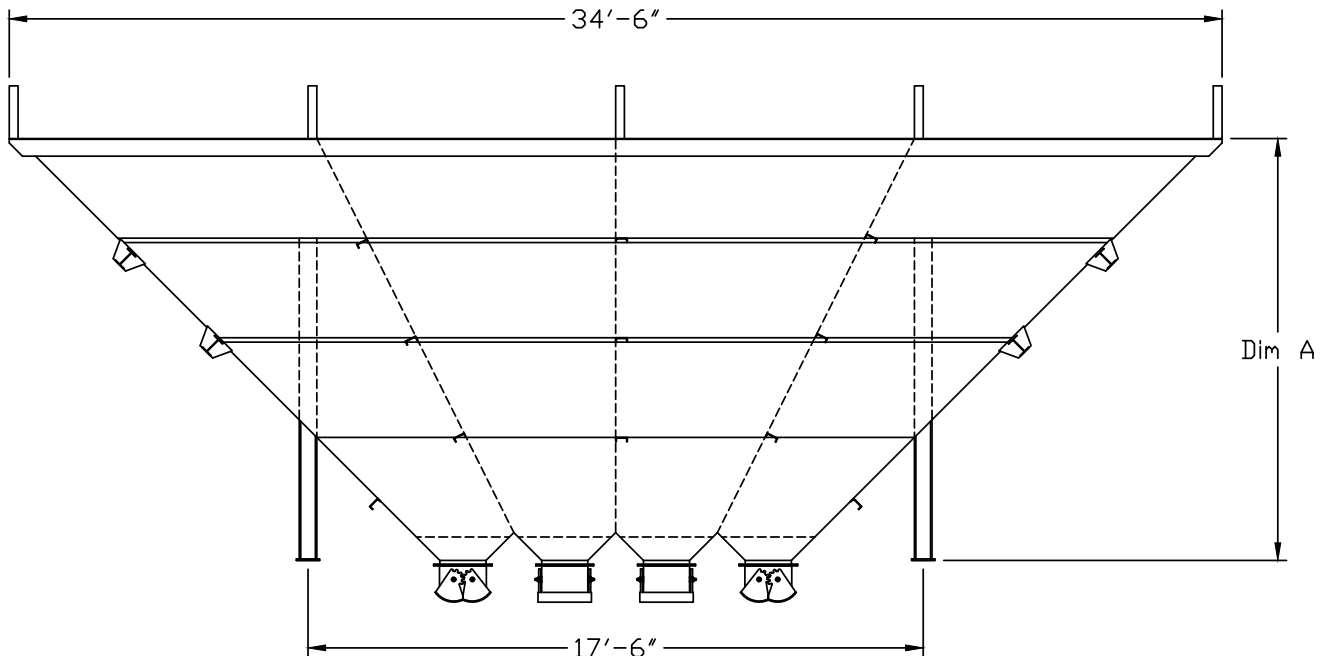
Capacity In Tons	Bin Height (Excluding Heap Plates)	Weight (Without Stand)	Weight (With Stand)	Dimension A
65	23'-0"	10,360#	15,900#	8'-0"
90	25'-0"	11,360#	16,900#	10'-0"
120	27'-0"	11,980#	17,500#	12'-0"
145	29'-0"	14,340#	20,200#	14'-0"
170	31'-0"	16,180#	22,100#	16'-0"
200	33'-0"	17,850#	23,800#	18'-0"

# Three Compartment Aggregate Bins





# Four Compartment Aggregate Bins



## Standard Equipment

- 1/4" Thick Material on all Cones and Sloped Walls
- 3/16" Thick Material on all Straight Walls and Dividers
- Removable Heap Plates: 1'-6" High x 3/16" Thick Material
- (4) 16" x 16" Aggregate Gates with Air Cylinders
- (2) 16" x 48" Aggregate Gates with Air Cylinders
- 8" Beam Structural Stand to Provide 14'-0" Clearance Under Gates
- Optional AR Steel Liner
- Optional Window Pane Design

Capacity In Tons	Bin Height (Excluding Heap Plates)	Weight (Without Stand)	Weight (With Stand)	Dimension A
140	27'-0"	16,515#	22,700#	12'-0"
180	29'-0"	19,915#	26,100#	14'-0"
215	31'-0"	22,100#	28,300#	16'-0"

# Four Compartment Aggregate Bins

